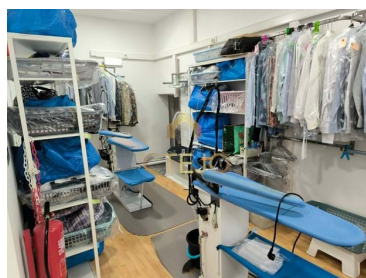
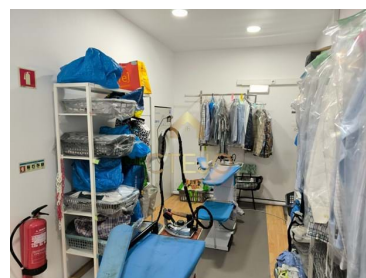




Moscavide e Portela - Commercial property



1
Bathrooms



60
Area (m²)



57 000 €
(EUR €)

Property Features

- Proximity: Airport, Shopping, Restaurants, City, Hospital, Pharmacy, Public Transport, Schools, Public Swimming Pools, Playground
- Laundry
- Views: City view
- Built year: 1988
- Storage / utility room
- Energetic certification: E



Mariana Bento

919957019 ²

mariana.bento@ctejo.pt

T +351 219552649 ¹ · T +351 282 000 000 ¹ · E geral@ctejo.pt
Rua Amílcar Cabral, nº7 A, 2695-016 Bobadela
AMI 15159

¹ (Call to national fixed network) | ² (Call to national mobile network)